

An introduction to LINX

Wprowadzenie do LINX

Raza Rizvi
LINX Council
September 2009

What is LINX?

- London Internet Exchange!
- 2x independent n*10G Layer 2 Ethernet rings
- 26 Brocade MLX/RX & Extreme BD switches
- IPv4 and IPv6 and multicast

195.66.224.0/23
(BROCADE LAN)



MRP Ring Master



8 x 10G



4 x 10G



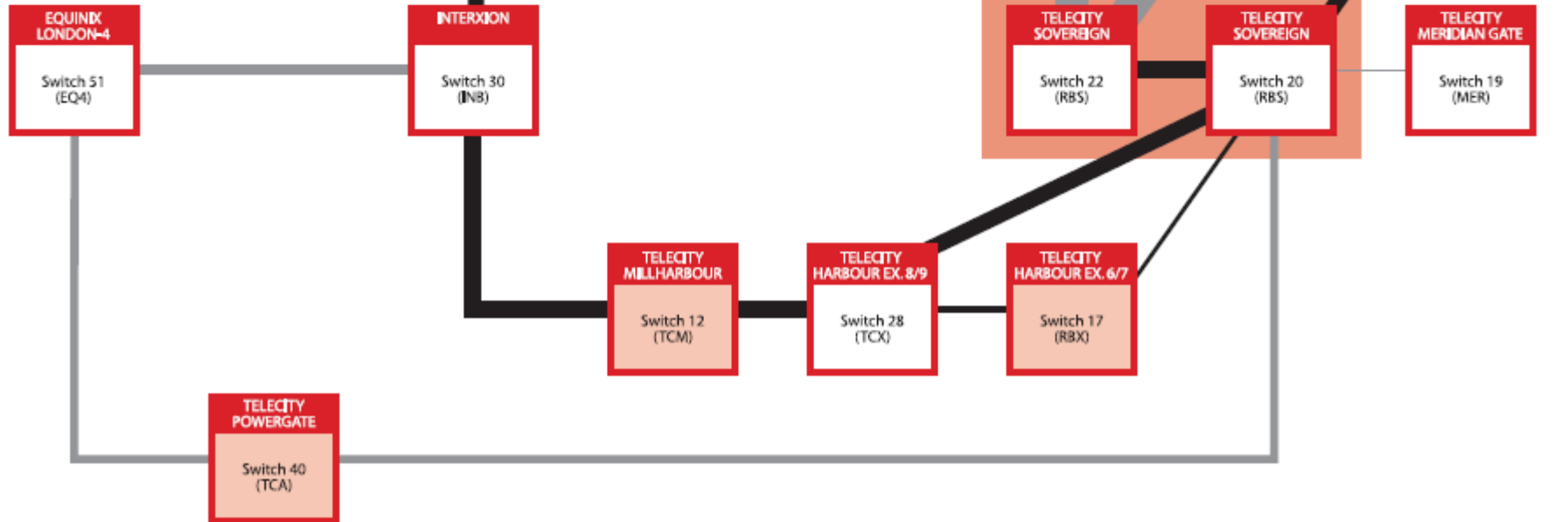
2 x 10G



1 x 10G



1 x 1G



195.66.226.0/23
(EXTREME LAN)

 EAPS Ring Master

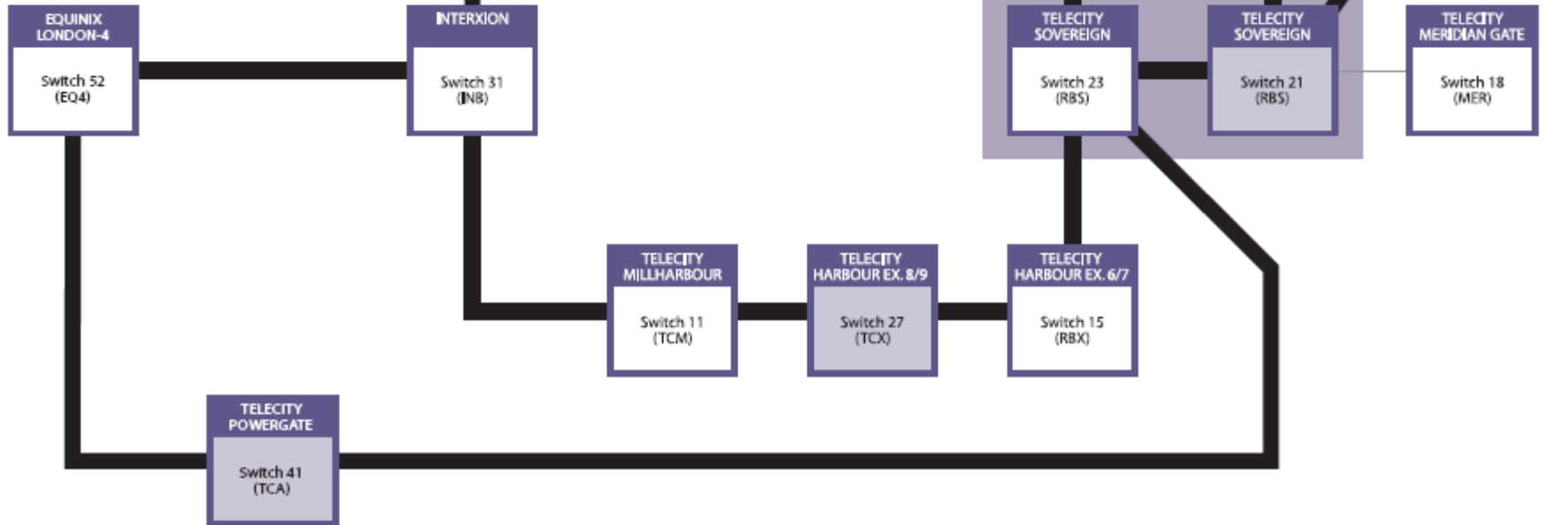
 8 x 10G

 4 x 10G

 2 x 10G

 1 x 10G

 1 x 1G

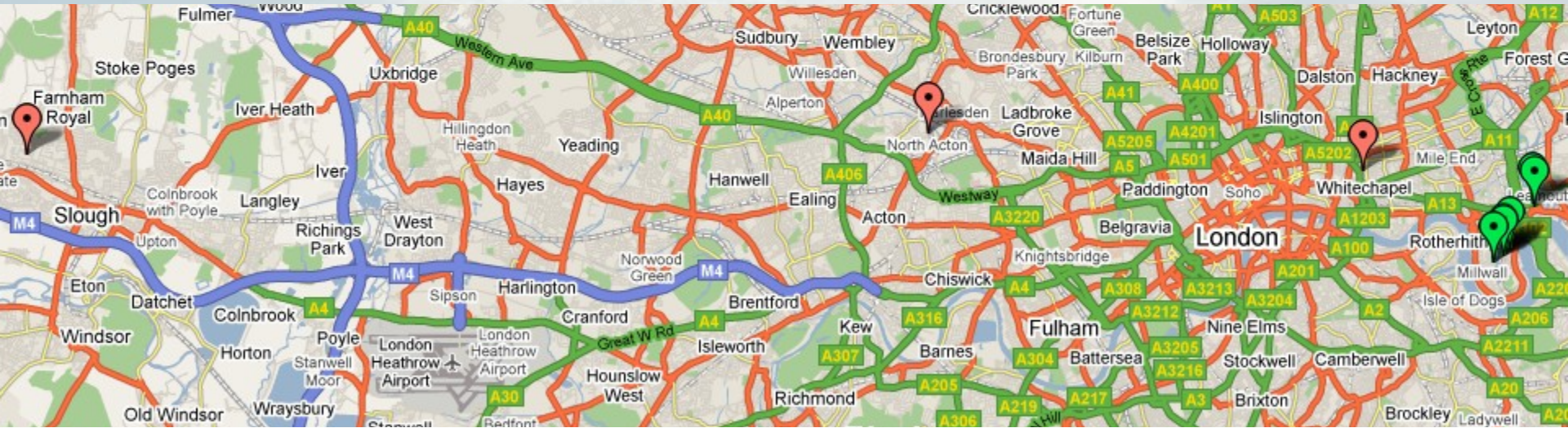


What is LINX?

- London Internet Exchange
- 2x independent n*10G Layer 2 Ethernet rings (Brocade & Extreme switches)
- All members must connect to the Brocade LAN first
- Private Interconnect over LINX managed fibre at many sites and between many sites

Where is LINX?

- Points of presence in 10 sites throughout London
 - 7 in Docklands area
 - 3 new PoPs in 2008
 - 100M/1G/10G/n*10G available for members in each site



- Extensive & diverse multi-vendor dark fibre network

LINX organisation

- Completely open membership
- Only rules are technical ones such as having a BGP AS 😊
- Mutual company model – owned by the members
- Strategic direction set by council of 6 elected by membership and CEO

LINUX staffing

Chief Executive



John Souter
Chief Executive Officer



Ann Hawkins
Executive Assistant

Sales & Marketing



Richard Yule
Sales & Marketing Manager



Jeremy Orbell
Marketing & Communications



Jennifer Atherton
Business Development Executive



Sol Pearmain
Business Development Trainee

Operations



Neena Singh
Marketing & Human Resources



Howard Fisher
Chief Operating Officer



Michael Lewis
Management Accountant

Public Affairs



Malcolm Hutty
Head of Public Affairs



Christos Kaitatzis
Member Relations Officer

I.T.



Hugh Spencer
IT Manager



Bernd Marienfeldt
Security Officer



Paul Daukas
Data Systems Designer
and Administrator



Tony Vroon
UNIX Systems Admin and
Genito Server Developer



Steve Harrison
UNIX and Web Sysadmin



Josh Wright
IT Support Trainee

Engineering



Mike Hughes
Chief Technical Officer



Owen Conway
Network Architect



Chris Hobden
Toolmaker



Gary King
Network Engineer



Neil Ratcliffe
Service Delivery Engineer



Martyn Ranger
Service Delivery Engineer



Pui Hang Miles
Engineering Support



Mo Shivji
Senior Network Engineer



Andre Els
Senior Network Engineer



Anne Bates
Network Engineer



Alan Farrell
Network Engineer

Technology



Chris Fletcher
Technology Development

- 30 staff today
- Still recruiting

<http://www.linx.net/job/>

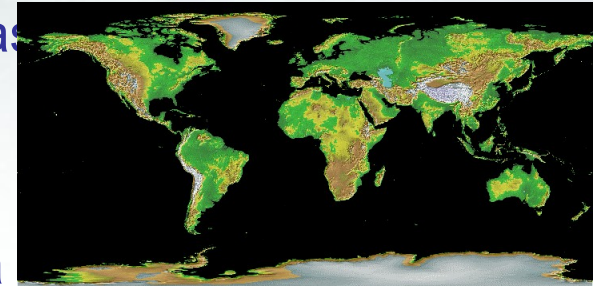
Types & locations of members

LINX member types:

- ISPs & telcos
- Academic networks
- Hosting companies
- Content providers
- CDNs
- Gaming companies
- Gambling companies
- Streaming media
- DDoS mitigation
- eCommerce companies
- Enterprise
- ...

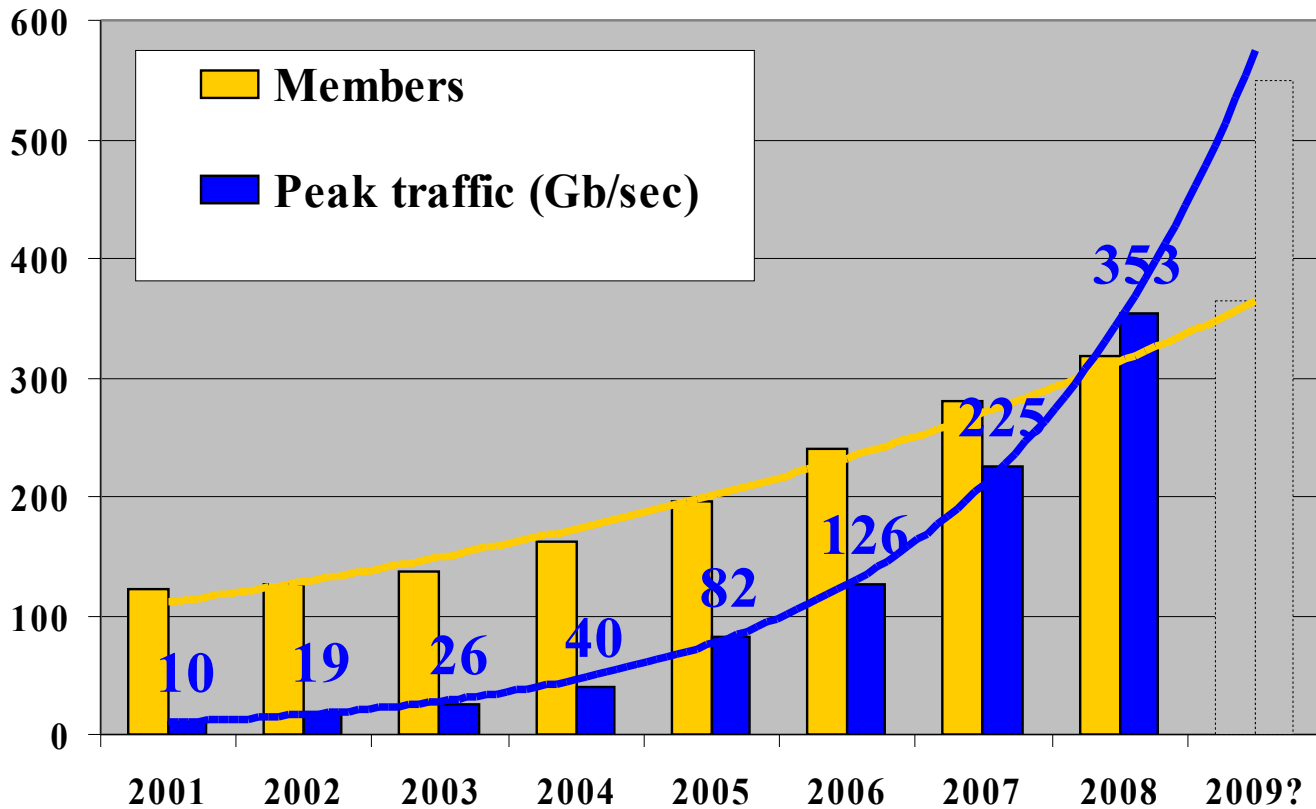
LINX member countries (47) inc:

- UK, Western Europe, USA & Canada
- Far East (Australia, China, Japan, Korea, Hong Kong, Singapore)
- Eastern Europe & Russia
- South Africa
- Middle East
- Iceland
- India
- Indonesia
- Bhutan
- Moldova



Membership & traffic growth

LINX growth 2001-2008



337 members
(+1 per week)

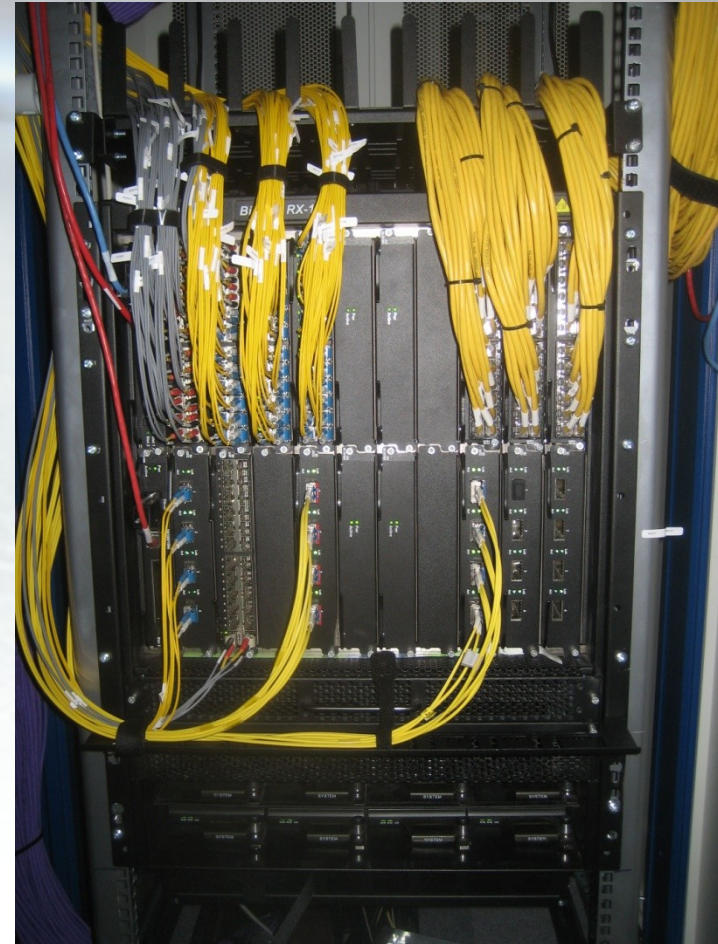
450+ Gb/sec
(public peering)

~650+ Gb/sec
(total peering)

198 10Gb/sec
member ports

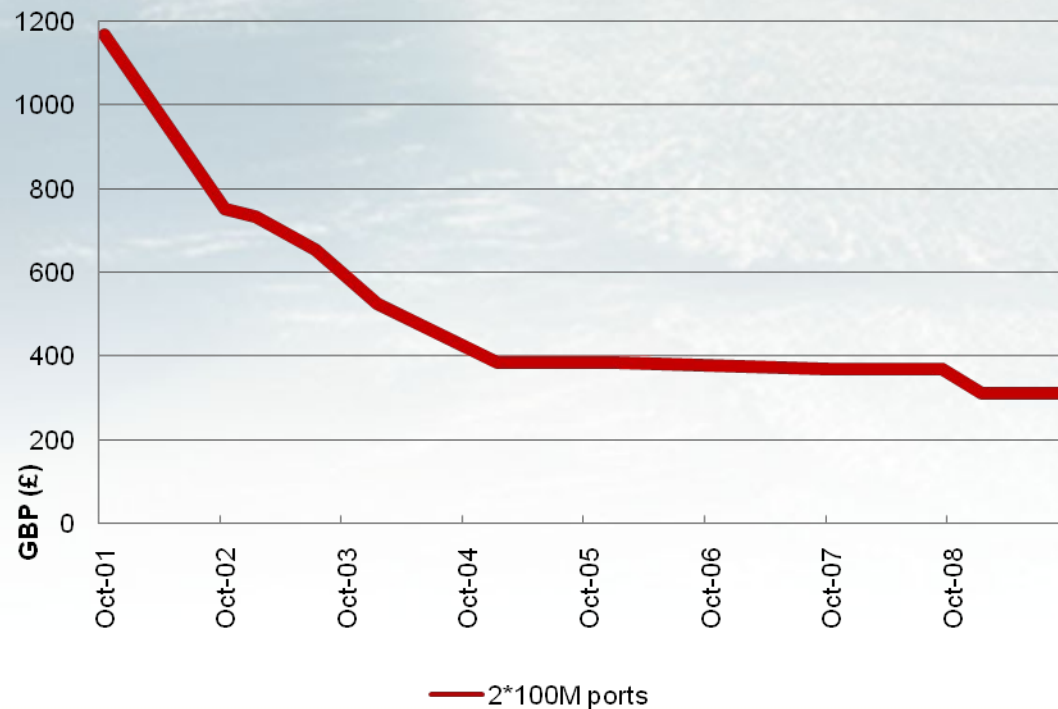
Facilitating peering at LINX

- LINX from Anywhere
- 'Endorsements' process
- Dual platform route servers
- Web-site facilities inc BENTO & sFlow
- Social networking
 - 4 member meetings per year
 - HotLINX newsletter
 - Twitter, LinkedIn, etc.
- Webcast



Pricing

LINX LAN Pricing - 100Mb (2 ports inc membership)



1st Extreme 100Mb port is free

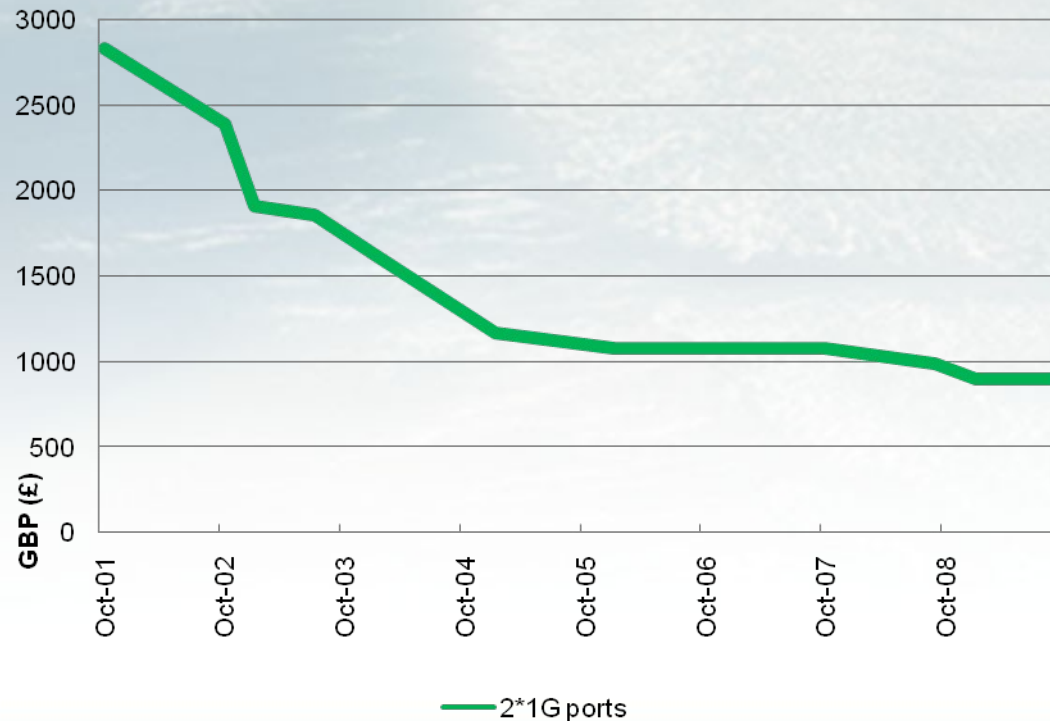
You can take a single port if you want!

No joining fee

No traffic based charging since 2006

Pricing

LINX LAN Pricing - 1Gb
(2 ports inc membership)



Extreme pricing
about 20% lower than
Brocade

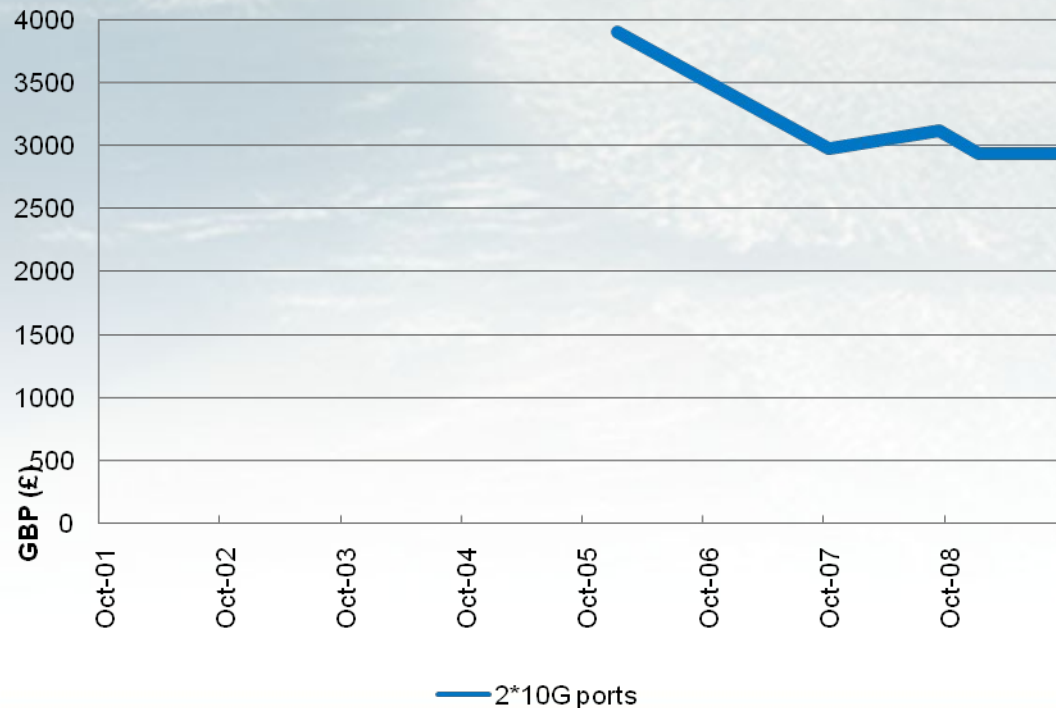
You can take a single
port if you want

No joining fee

No traffic based
charging since 2006

Pricing

LINX LAN Pricing - 10Gb
(2 ports inc membership)



Extreme pricing
about 20% lower than
Brocade

You can take a single
port if you want – some
have >4...

Did I say no joining fee
and no traffic based
charging since 2006
already!

Closing thoughts

- **LINX clearly succeeds in providing routes, peering, and services for our members.**
- **We look forward to welcoming Polish operators at LINX67 (November 16/17th 2009)**

Powitanie!

Questions about LINX?



Please email
raza@linx.net or
sales@linx.net

Online at
www.linx.net/join
(in Polish)