



What drives your design?

Stephan Hochdörfer, bitExpert AG

# What drives your design?

---

## About me

- Stephan Hochdörfer, bitExpert AG
- Department Manager Research Labs
- enjoying PHP (and a little bit of Java) since 1999
- S.Hochdoerfer@bitExpert.de
- @shochdoerfer



What drives your design?

---

Remark: Sorry no code!



What drives your design?

---

Code is not important, the  
domain is!



What drives your design?

---

# Domain Driven Design



What drives your design?

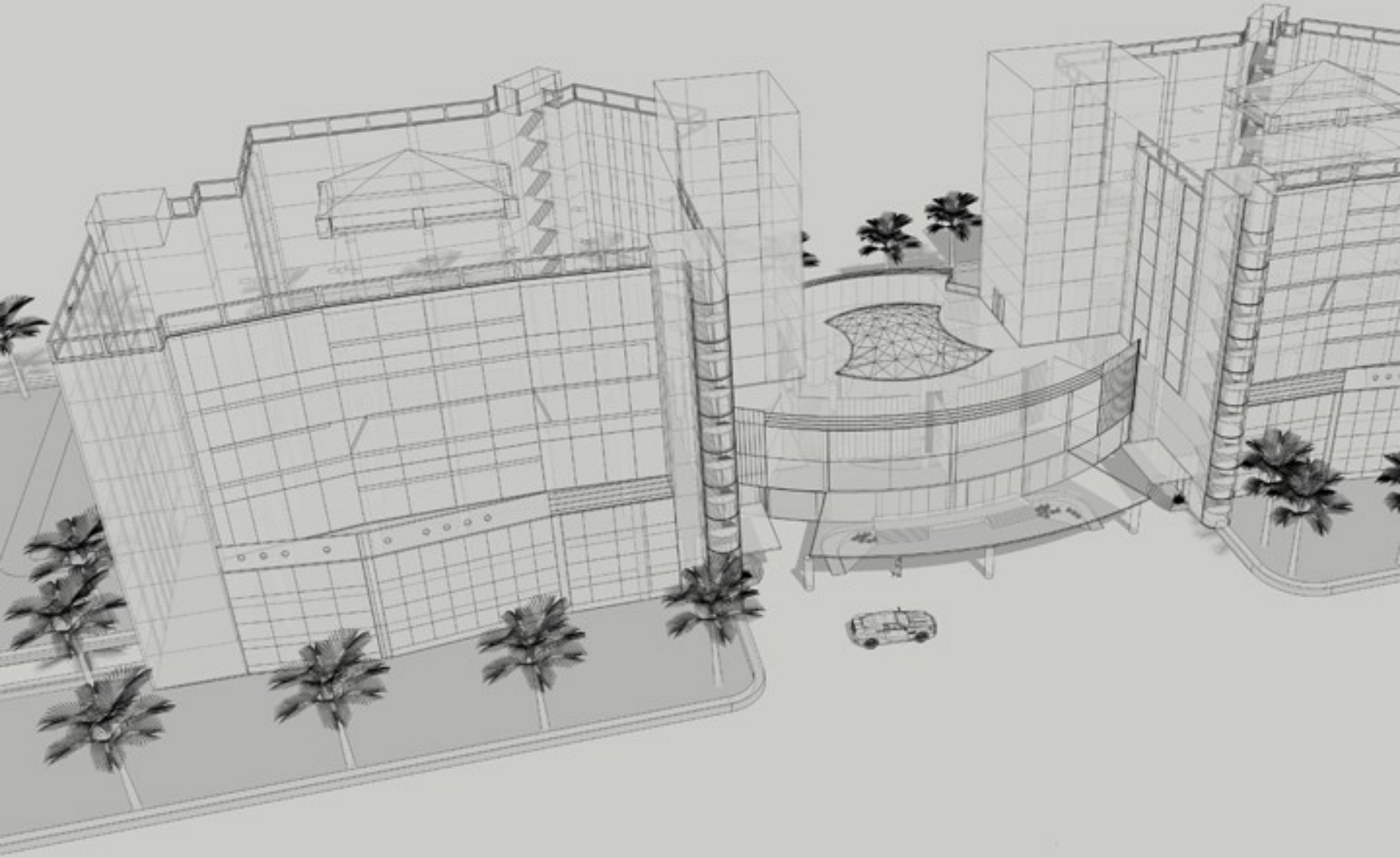
---

What`s a domain?




What drives your design?

What`s a domain?



What drives your design?

Domain knowledge anyone?



Back to  
School →



What drives your design?

Will die without care!



What drives your design?

---

How to build  
domain knowledge?





What drives your design?

Talk to the experts!



What drives your design?

---

How to express  
domain knowledge?



What drives your design?

**Models please!**

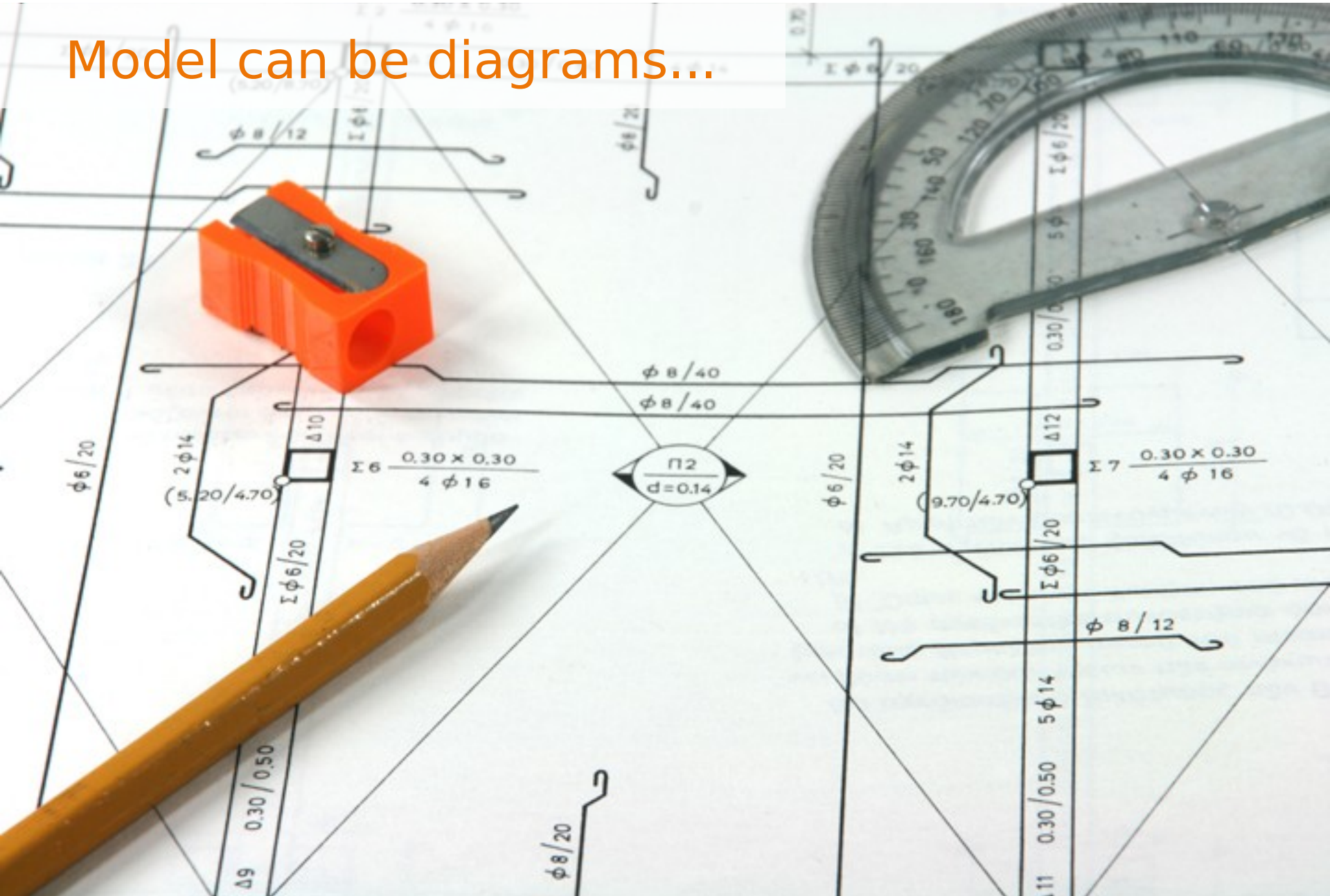






What drives your design?

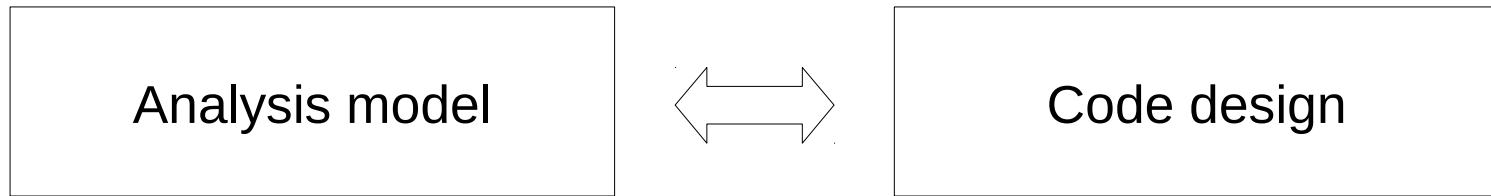
Model can be diagrams...



What drives your design?

---

## Many models?





What drives your design?

---

How to describe a model?



What drives your design?

---

## Ubiquitous Language

"Britain and America are two nations  
divided by a common language."

George Bernard Shaw / Oscar Wilde



What drives your design?

---

## Ubiquitous Language

"Business and Developers are two nations  
divided by a common language."

Casey Charlton



What drives your design?

---

## Ubiquitous Language

A language specific  
to a certain domain.



What drives your design?

## Ubiquitous Language

Who is the „Customer“?



What drives your design?

---

## Ubiquitous Language

Please, use it in your  
code as well!



What drives your design?

---

## Domain specific language

```
if(1 == node.getLeft()) {  
    // handle root node seperatly  
  
    // [...]  
}  
else {  
    // handle all other nodes  
  
    // [...]  
}
```



What drives your design?

---

## Domain specific language

```
if(node.isRoot()) {  
    // [...]  
}  
else {  
    // [...]  
}
```



What drives your design?

---

## Domain specific language

```
if(category.isStart()) {  
    // [...]  
}  
else {  
    // [...]  
}
```

What drives your design?

---

## Domain specific language

Bonus point: Discuss  
domain code with your client!



What drives your design?

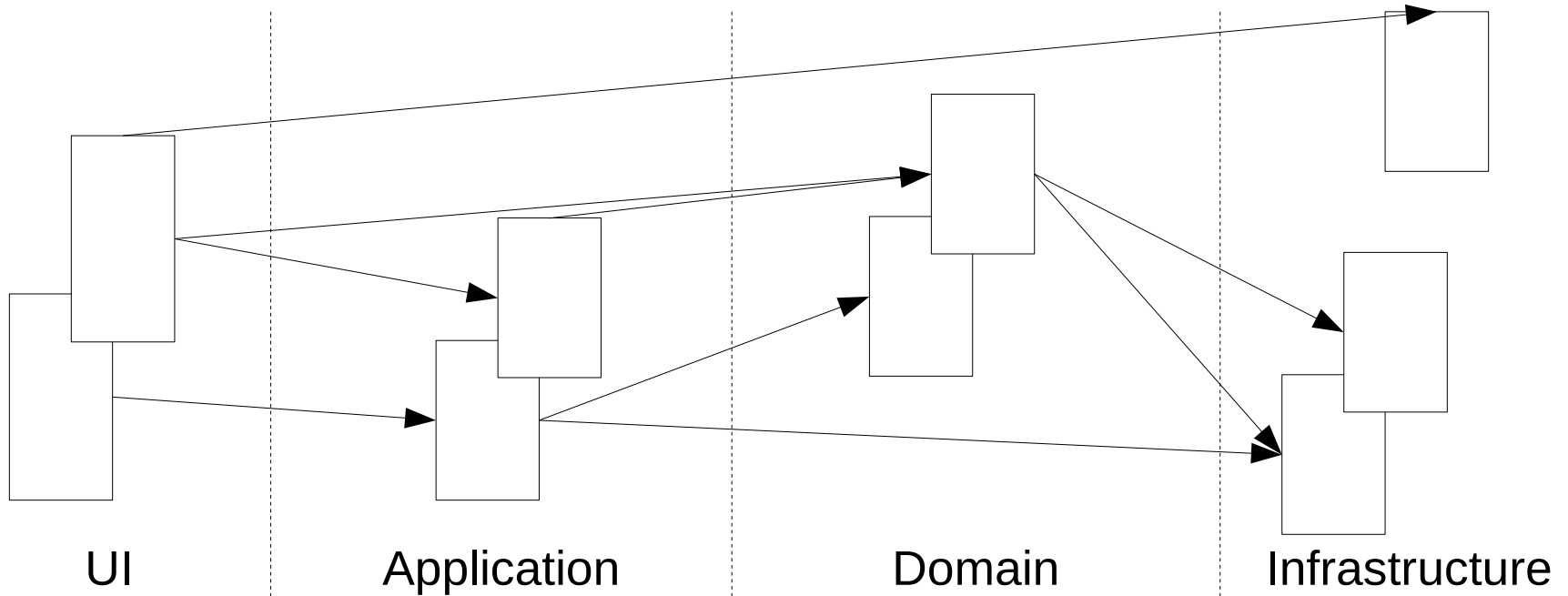
---

## Layered architecture



What drives your design?

## Layered architecture



What drives your design?

---

## Layered architecture

Tightly coupled code will lead  
to unmaintainable code.



What drives your design?

---

## Entities

- Objects with an identity
- Spanning the life of the system
- The model must define what it means to the same thing
- e.g Person object

What drives your design?

---

## Value Objects

- Objects without an identity
- Can be easily created or discarded
- We do not care what the object is, but what it has
- References other Value Objects or Entities



What drives your design?

---

## Aggregates

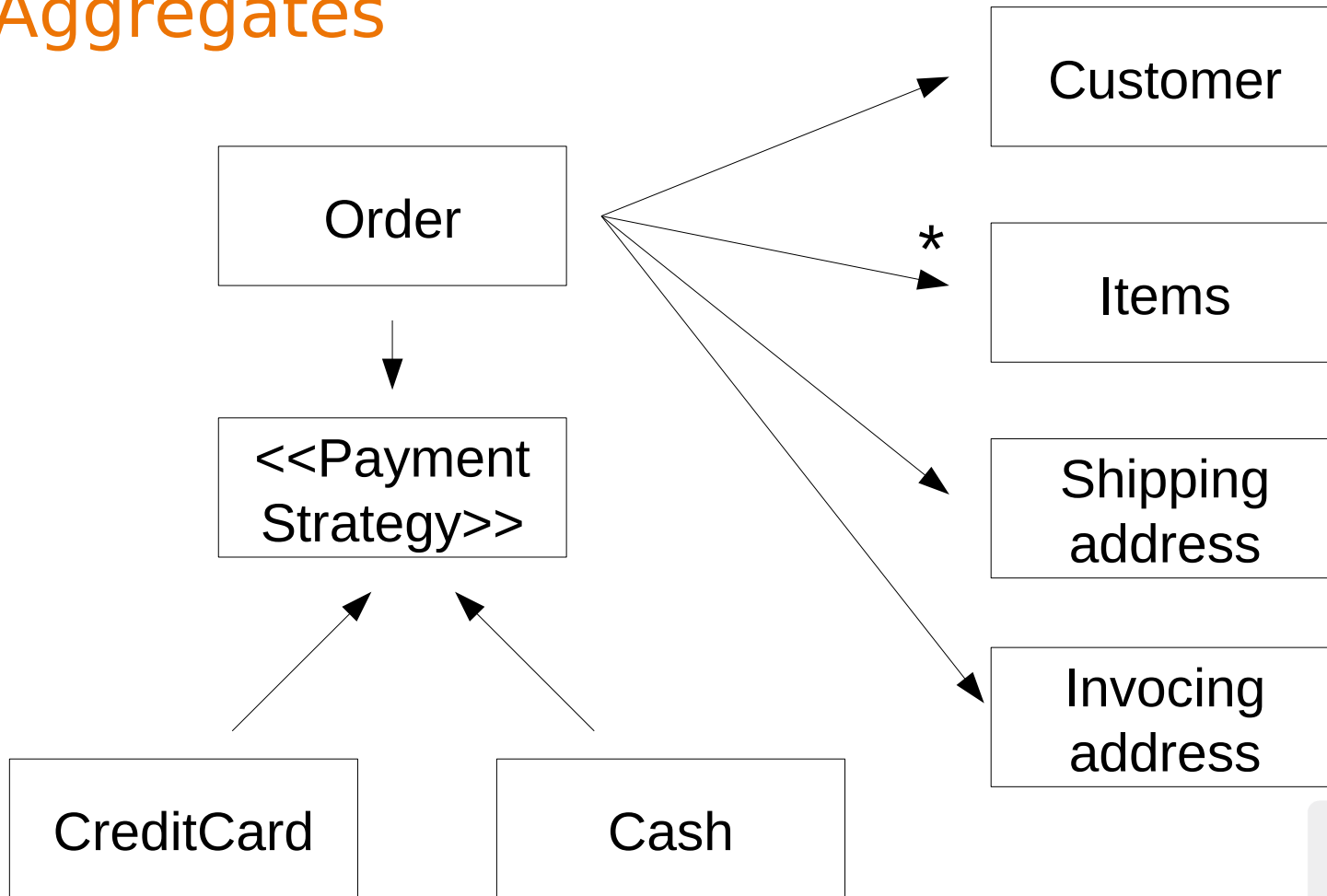
Too many objects?





# What drives your design?

## Aggregates



What drives your design?

---

## Service objects

- Services are verbs of the ubiquitous language.
- Provides functionality for the domain
- A service is not an store, does not provide persistency!
- Performs operations

What drives your design?

---

Growing too big?



What drives your design?

---

Growing too big?

Modularize!



What drives your design?

---

Where to retrieve the data from?



What drives your design?

---

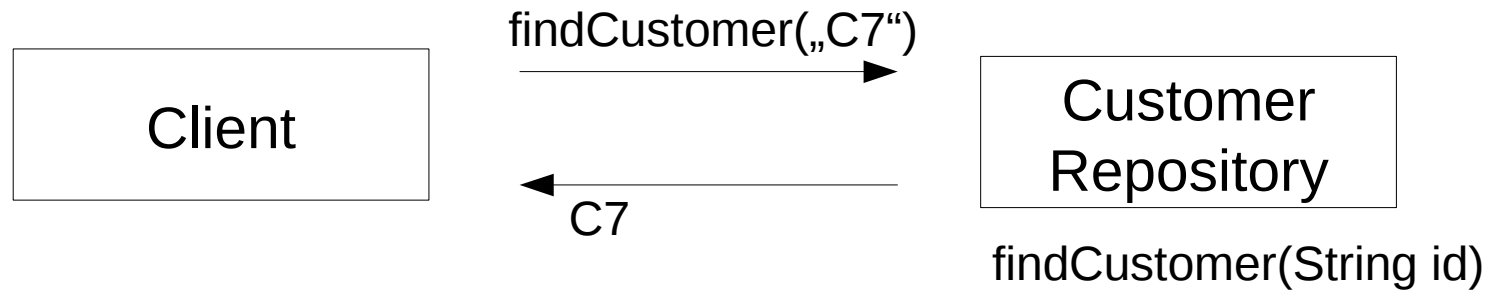
## Repositories

- No coupling to persistence infrastructure in domain code!
- Encapsulates the logic to retrieve object references
- Communicates with the infrastructure
- Does not care where the entries are stored
- One central place where the data communication happens



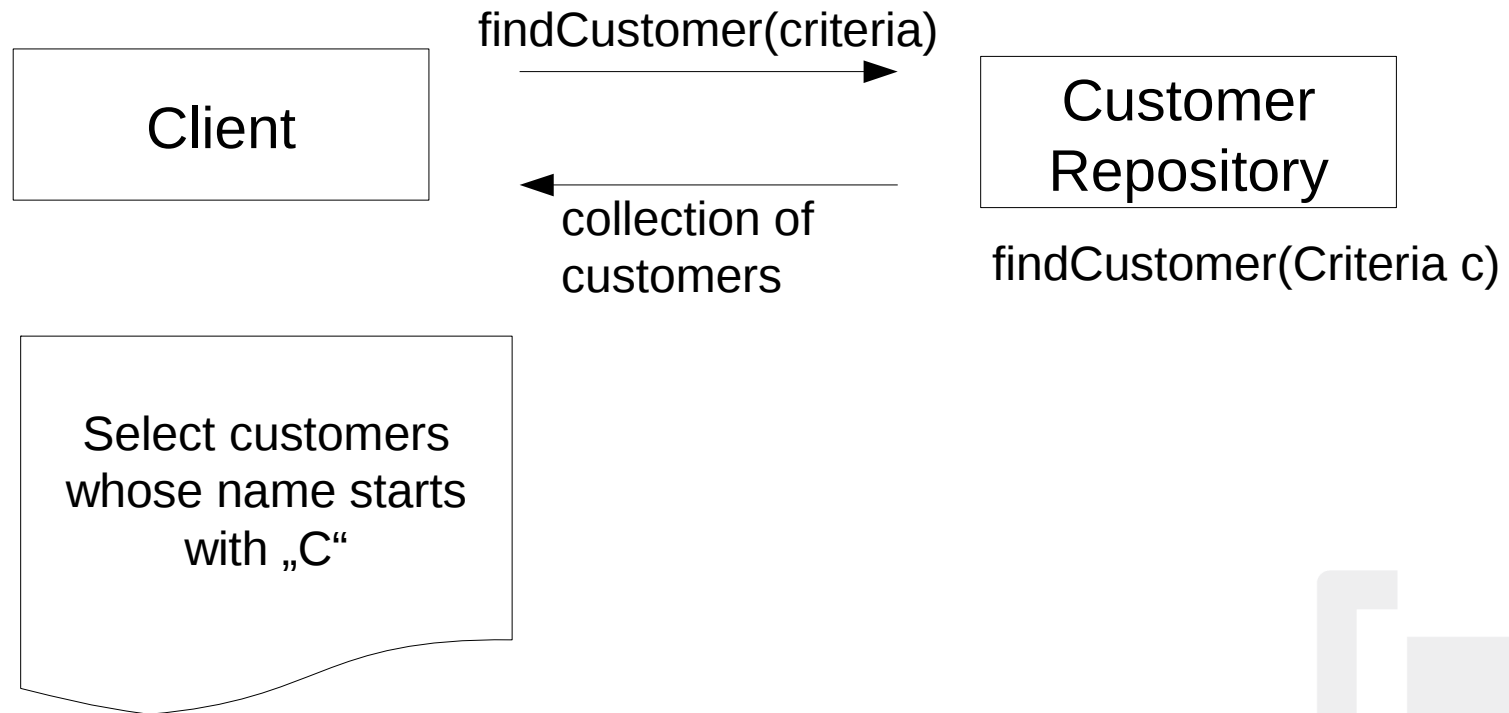
What drives your design?

## Repositories



What drives your design?

## Repositories - Specifications





What drives your design?

---

## Repositories - Specifications

```
var spec = newPizzaSpecification()  
    .BasedOn(newMargaritaPizzaSpecification())  
    .WithThickCrust()  
    .WithExtraCheese();  
  
var pizza = new PizzaFactory().  
    CreatePizzaFrom(spec);
```



What drives your design?

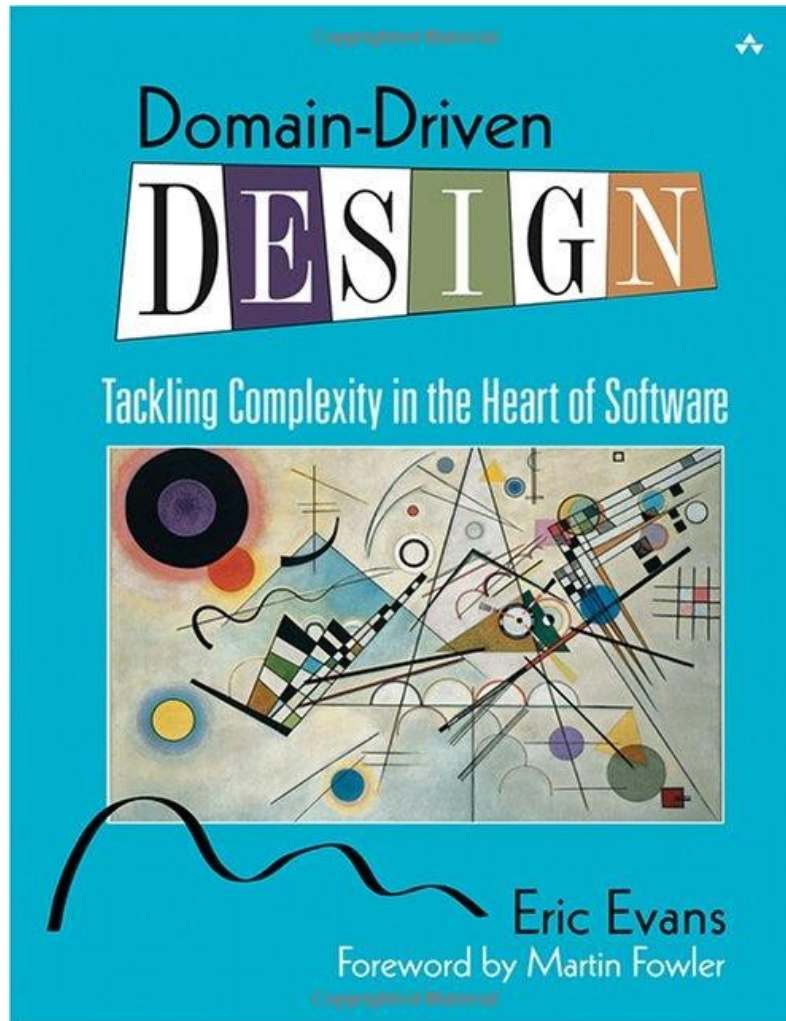
---

## Repositories – Specifications for Queries

```
var margaritaPizzaCustomers =  
    newMargaritaPizzaSpecification();  
  
var customers = this.customerRepository  
    .GetCustomersSatisfying(margaritaPizzaCustomers);
```



# What drives your design?





Thank you!

<http://joind.in/3184>